



POWERED PERFORMANCE.

WALTHER COMPETITION



CATALOG 2023

CONTENTS



POWERED PERFORMANCE.



05

LG400

AIR RIFLES

MADE BY WALTHER. MADE FOR YOU.



23

KK500

SMALL-BORE RIFLES

THROUGH EVOLUTION. TO REVOLUTION.



29

LP500

AIR PISTOLS

MAXIMUM. PERFORMANCE.



35

GSP500

SPORTING PISTOLS

UNCOMPROMISINGLY ENGINEERED



41

MEISTER MANUFAKTUR

MEISTER MANUFAKTUR

BY WALTHER



42

T9F

TEN NINE FACTORY

BY WALTHER

LG400



MADE BY WALTHER. MADE FOR YOU.

The Walther development centre has designed a high-tech sporting rifle that's ahead of its time: a pioneer in terms of functionality, with an unprecedented range of configuration options. Put together your own customized air rifle and start the competition season with the perfect companion. Whether you're a gun club member or an Olympic champion, the LG400 was designed to make you a winner.

WILLIAM SHANER (USA)

Gold at Olympic Games Tokyo 2020
10m Air Rifle Men with Walther LG400-E

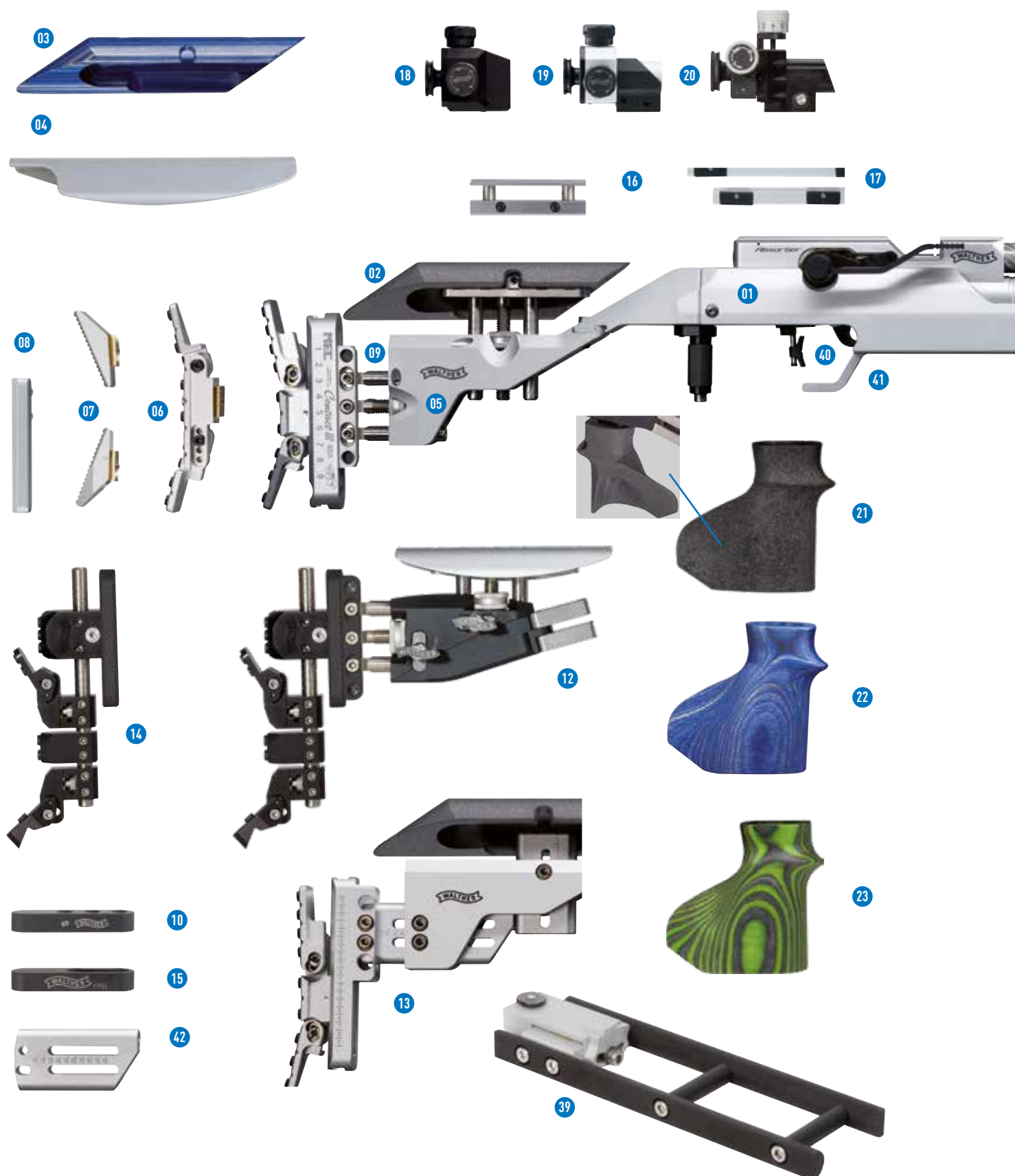


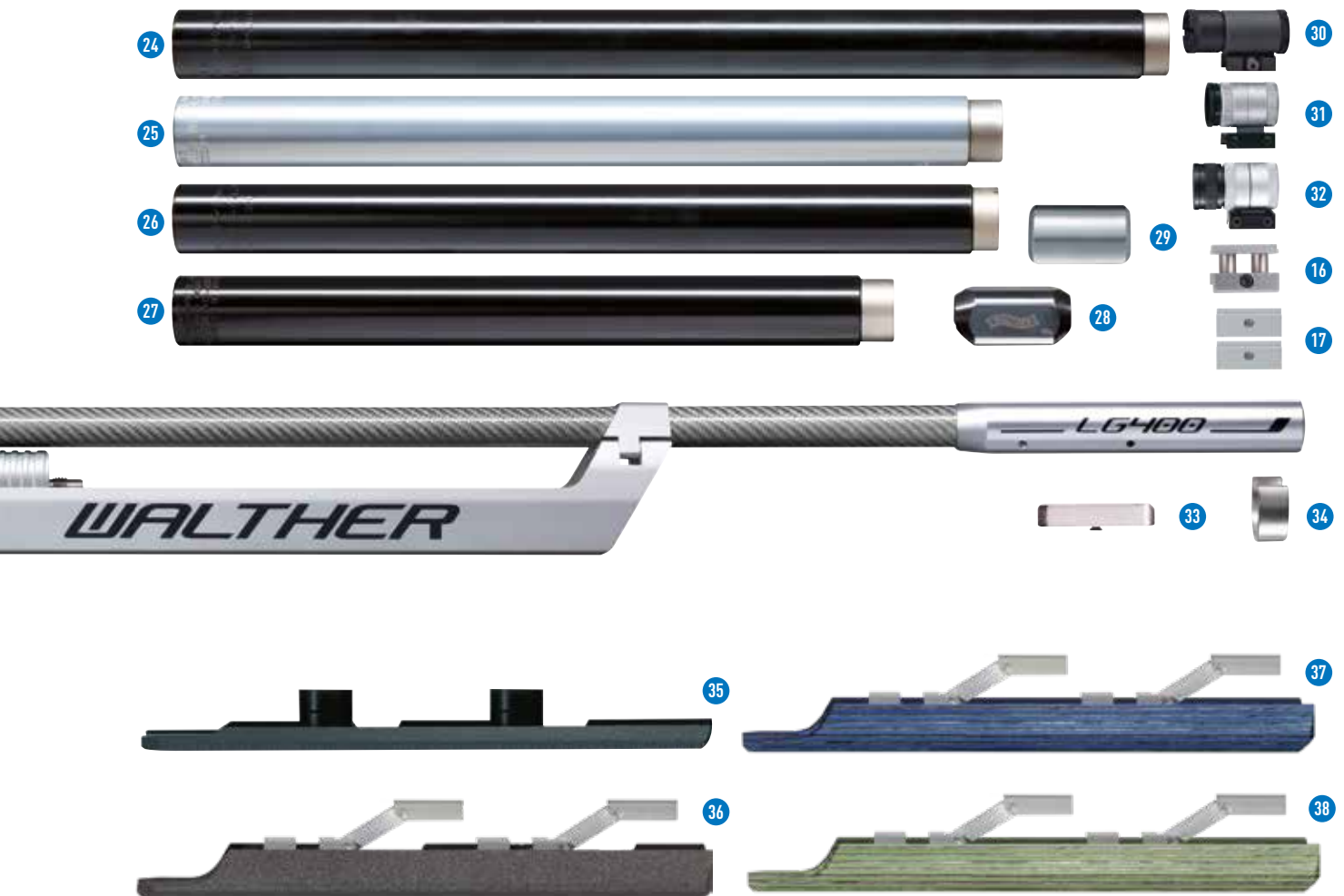
QR code for detailed product information

LG400

MATCH AIR RIFLES, CALIBER 4,5 MM (.177)

The modular system of the LG400 model range gives you almost unlimited flexibility.





- | | | |
|---|---|---|
| 01 Basic rifle | 15 Weight for cheek piece rod and butt plate rod 100 g | 29 Barrel jacket weight, movable, stainless, 100 g |
| 02 PROTOUCH cheek piece | 16 Block Club raised line of sight | 30 BASIC foresight holder, 22 mm dia. |
| 03 Laminated wood cheek piece | 17 UP sight raiser blocks | 31 CENTRA SCORE foresight holder, 18 mm dia. |
| 04 ALL-IN-ONE cheek piece | 18 BASIC match diopter | 32 CENTRA SCORE foresight holder, 22 mm dia. |
| 05 EXPERT aluminum butt stock | 19 SPORT match diopter with swivel movement | 33 Fore-end weight, 50 g |
| 06 MEC CONTACT III aluminum butt plate wing | 20 INSIGHT-OUT match diopter | 34 Barrel weight, 30 g |
| 07 SINUS aluminum butt plate wing | 21 Biometric grip, PROTOUCH, right, size S/M/L | 35 ECONOMY fore-end |
| 08 Shoulder rest (butt plate extension) for rest shooting | 22 Biometric grip „Blue Angel“, sizes S/M/L for right-handers, M for left-handers | 36 EXPERT PROTOUCH fore-end |
| 09 Butt plate rod set: short (60 mm), long (100 mm) or extra long (150 mm); Butt plate rod: short (40 mm) or long (65 mm) | 23 BIOMETRIC grip „Green Pepper“, right, Size M | 37 EXPERT fore-end, blue |
| 10 Weight for cheek piece rod and butt plate rod 100 g | 24 Maxi steel compressed air cylinder, black, 930 g | 38 EXPERT fore-end, green |
| 12 Monotec butt stock | 25 Aluminum compressed air cylinder, silver, 460 g | 39 SMART bracket for rest shooting |
| 13 COMPETITION aluminum butt stock | 26 Steel compressed air cylinder, black, 750 g | 40 VARIO trigger blade |
| 14 Monotec butt plate | 27 Junior aluminum compressed air cylinder, black, 450 g | 41 Aluminum trigger guard |
| | 28 Barrel jacket weight, movable, 100 g | 42 Butt plate slide, short (70 mm) or long (100 mm), Cheek piece slide, short (37 mm) or long (64 mm) |

LG400 Monotec

BEST PERFORMANCE - BEST DESIGN - BEST VARIABILITY

The Walther LG400 monotec combines the versatile adjustment possibilities of the KK500 stock with a unique suspension to deliver consistently outstanding performance.

The system is fixed only at two points on the Monotec block, which creates a "Floating system" effect. Any vibrations created in the system are not transmitted to the stock, so the shooter gets the straight feedback of the shot without any unwanted "noise" (or clear shot information), at the same time, because barrel is fixed. Vibrations can't be transmitted to the muzzle, which give unbeatable accuracy and overall performance. The result is top shooting performance. Moreover, the

action can be quickly installed and removed without affecting trueness. The rifle can be sighted in simply by clamping in the monotec block.

Another advantage is that it can be easily disassembled for compact transport.

With its optimized weight distribution the LG400 is also ideal for rest shooters.



MONOTEC STOCK DESIGN

- Excellent ergonomics in the butt stock area, proven from the KK500
- Raised butt stock for a relaxed shooting position
- New aluminum butt plate with more adjustments than ever



DISPLACEMENT OF THE BUTT STOCK

- Infinitely adjustable cast by means of a parallel linkage for perfect ergonomics



MONOTEC MOUNTING

- The monotec unit prevents stresses in the system, thus ensuring consistently outstanding shooting performance.
- It can be adjusted in length and height depending on the requirements of the discipline and the shooter.

LG400 MONOTEC MODELS

- Walther LG400-E monotec, BIOMETRIC grip, right, size M
- Walther LG400-M monotec, BIOMETRIC grip, right, size M

Item no.

283 80 36
283 80 28

LG400 MONOTEC ACCESSORIES

- Walther monotec exchangeable stock for LG400/300
- Walther BIOMETRIC grip, right, grip size M
- Monotec elevation kit (raiser block, trigger blade extension)
- Trigger blade extension in longitudinal direction
- PERFORMANCE aluminum butt plate
- Set of additional hooks for PERFORMANCE aluminum butt plate (KK)
- Trigger guard assembly

283 81 50
283 70 05
284 08 47
284 08 55
283 70 13
284 08 63
284 08 71

LG400-E MONOTEC

Right, M grip • Illustration includes trigger guard (accessory)

ITEM NO. 283 80 36



LG400-M MONOTEC

Right, M grip • Illustration includes trigger guard (accessory)

ITEM NO. 283 80 28



PERFECT FIRING POSITION FOR PROFESSIONALS

- Newly designed BIOMETRIC grip for optimum control of the shooting position
- Deep cut lets the shooter to place the grip as close as possible to the chest.

MONOTEC BLOCK

- Rifle can be sighted in when the stock is clamped in
- Action can be removed and installed quickly without affecting trueness
- System and Monotec Block can be offset in the chassi

LG400 Anatomic

UNIQUE – LIKE YOU.

The models with an Anatomic stock combine the warmth of natural wood with adjustment possibilities that until now have only been available with aluminum stocks.

LG400-E ANATOMIC

Electronic trigger • "Blue Angel" laminated wood, right, grip size M

ITEM NO. 282 55 97



LG400 CONFIGURATION

- Compressed air system for 300 and 200 bar
- Modular system for custom configuration and upgrades
- Custom centre of gravity and weight distribution
- EQUALIZER magnetic absorber system
- Pressure reducer with maintenance-free QUICKCLEAN air filter
- Ergonomically shaped loading lever (left-hand or right-hand positioning)
- Carbon fibre barrel jacket
- ECO valve technology (minimum impact, shorter shot release time, lower air consumption)
- Breech (easy loading, precise pellet guidance)
- Loading status indicator
- Dry-practice mode
- VARIO trigger for extremely fine settings

LG400 ANATOMIC FEATURES

- Steel compressed air cylinder with pressure gauge
- Laminated wood stock with a wide range of settings and T-slot rail
- Precision setting of stock length and cheek piece
- Adjustable tube position to maximize sight line length
- Adjustable 3D grip with MEMORY effect
- Infinitely variable fore-end with toggle joints
- MEC CONTACT III light metal butt plate
- Absolutely tension-free barrel mounting
- INSIGHT-OUT match diopter and CENTRA SCORE foresight holder
- BLOCK CLUB sight raiser blocks
- Including gun case and accessories



LG400-M ANATOMIC

Mechanical trigger • "Blue Angel" laminated wood, right, grip size M

RIGHT ITEM NO. 275 80 08 • LEFT ITEM NO. 278 12 21



LG400-M ANATOMIC

Mechanical trigger • "Green Pepper" laminated wood, right, grip size M

RIGHT ITEM NO. 282 24 40



LG400 Expert

PREMIUM FEATURES.

When it comes to stock adjustment, diopter and accessories, the Expert fulfills professional standards. The principle: "Nothing but the best for the best!"

LG400-E EXPERT

RIGHT ITEM NO. 280 71 14 • LEFT ITEM NO. 280 86 41



THE E-TRIGGER: A MATCH WINNER

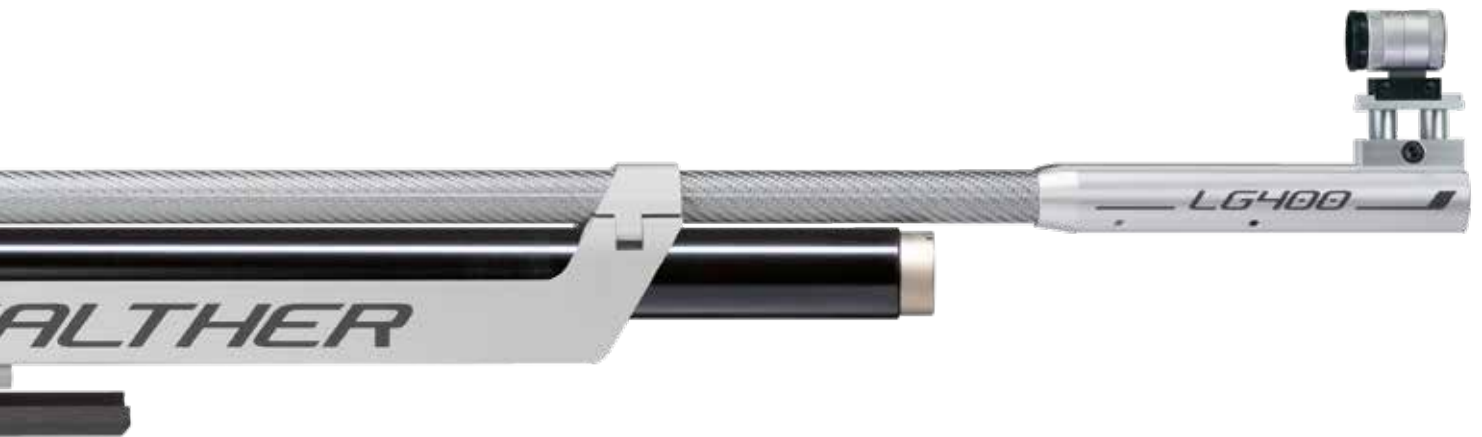
An electronic trigger offers persuasive advantages: smooth and quick firing, and a trigger pull weight that can be reduced to 15 g. Even in single-stage mode there is no risk of inadvertently firing a shot. A compact rechargeable battery has a capacity of more than 5,000 shots per charge. It can be recharged using a mini-USB from any PC or external charger – and after only about a minute of charging you're ready for another 100 shots. There are very few mechanical components. This reduces wear, ensuring reliability and precision over many years. Less mechanical parts moving means less vibrations and better shot readability.

LG400-E EXPERT FEATURES

- Precision setting of stock length and cheek piece
- Adjustable 3D grip with MEMORY effect
- Adjustable tube position to maximize sight line length
- Infinitely variable fore-end
- MEC CONTACT III light metal butt plate
- Steel compressed air cylinder with pressure gauge
- INSIGHT-OUT match diopter and CENTRA SCORE foresight holder
- Block Club sight raiser blocks
- Electronic trigger

LG400-M EXPERT FEATURES

- Precision setting of stock length and cheek piece
- Adjustable 3D grip with MEMORY effect
- Infinitely variable fore-end
- MEC CONTACT III light metal butt plate
- Steel compressed air cylinder with pressure gauge
- INSIGHT-OUT match diopter and CENTRA SCORE foresight holder
- BLOCK CLUB sight raiser blocks



LG400-M EXPERT

Mechanical trigger

RIGHT ITEM NO. 275 80 32 • LEFT ITEM NO. 278 12 39



LG400-M EXPERT

Electronic trigger • "Green Pepper" laminated wood

RIGHT ITEM NO. 282 24 58



LG400 Competition

OUR BEST SELLER.

The Competition models are popular on account of their clear lines and exquisite surface finish. Like the other LG400 rifles, they offer almost unlimited setting options.

LG400 COMPETITION CONFIGURATION

- Anatomic aluminum stock with T-slot rail
- Compressed air system for 300 and 200 bar
- EQUALIZER magnetic absorber system
- Pressure reducer with QUICKCLEAN air filter
- Dry-practice mode
- ECO valve technology
- VARIO trigger for extremely fine settings
- Wide breech with loading status indicator
- Ergonomic loading lever can be mounted on the right or left
- Plastic case

LG400 COMPETITION COMPETITION FEATURES

- Quick-action setting of stock length and cheek piece
- Adjustable 3D grip with MEMORY effect
- Fore-end with a wide range of settings
- MEC CONTACT III light metal butt plate
- Steel compressed air cylinder with pressure gauge
- SPORT match diopter with swivel movement and CENTRA foresight holder





POWERED PERFORMANCE.



LG400 ALUTEC COMPETITION

RIGHT ITEM NO. 280 15 07 • LEFT ITEM NO. 280 15 15

LG400 Blacktec / Bluetec

UNBEATABLE VALUE FOR MONEY.

Good things don't always have to be expensive. The Walther LG400 Blacktec and the Walther LG400 Bluetec come in an intelligent basic configuration that can be modified at any time – ideal for anyone starting out in competition shooting.

LG400 BLACKTEC UPGRADED CONFIGURATION

- Compressed air system for 300 and 200 bar
- Pressure reducer with QUICKCLEAN air filter
- Dry-practice mode
- ECO valve technology
- VARIO trigger for extremely fine settings
- Wide breech with loading status indicator
- Ergonomic loading lever can be mounted on the right or left
- Lockable plastic gun case



LG400 BLACKTEC UPGRADED FEATURES

- Aluminum stock with a wide range of settings (grip is rotatable and adjustable in length, fore-end adjustable in height and slidable, infinitely adjustable cheek piece and stock length)
- For right-handers or left-handers
- T-slot rail for three-position competitions and mounting of a bracket for bench rest shooting
- SINUS aluminum butt plate
- Steel compressed air cylinder with pressure gauge
- BASIC match diopter and foresight holder
- Low basic weight (approx. 4,000 g)
- Absorber can be retrofitted
- Optional accessories (lightweight aluminum cylinder for juniors, bracket and diopter raiser blocks for bench rest shooting)



LG400 BLACKTEC

ITEM NO. 280 35 77



LG400 BLUETEC

ITEM NO. 284 76 04

LG400 BLUETEC FEATURES

- Newly developed blue aluminum stock
- Adjustable cheek piece and butt plate
- T-slot rail integrated into the stock
- Walther BASIC match diopter
- Walther BASIC 22 front sight tunnel

LG400 for gun clubs

CLASSIC WOODEN STOCK FOR CLUBS AND INDIVIDUALISTS.

Gun clubs need robust, all-purpose sporting arms that come at a reasonable price but make no compromises in terms of performance and quality. The LG400 family of rifles includes models for club members that have impressed thousands of users with their cutting-edge technology and reliability. There is also a model for young shooters.

LG400 JUNIOR

ITEM NO. 281 03 52



LG400 UNIVERSAL

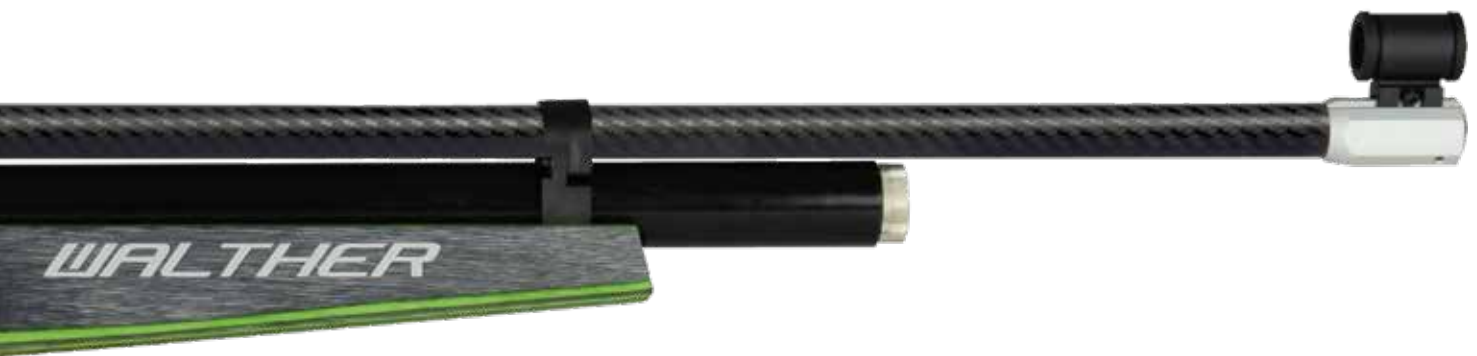
ITEM NO. 286 86 95

LG400 UNIVERSAL FEATURES

- Universal laminated wood stock for right/left position
- T-slot rail for three-position competitions
- Ambidextrous loading lever
- Infinite and quick-action setting of stock length and cheek piece
- Slip-resistant rubber butt plate
- Steel compressed air cylinder with pressure gauge
- BASIC match diopter and foresight holder
- Low basic weight (approx. 3,800 g)
- Absorber can be retrofitted

LG400 JUNIOR - THE RIFLE THAT GROWS WITH YOU

- Shortened sight radius: 700 mm
- Shortened ultra-light aluminum cylinder with pressure gauge
- Improved stock geometry
- Infinitely adjustable BASIC stock length and cheek piece height
- Dry-practice mode
- Sturdy Walther BASIC match diopter and foresight holder
- Low basic weight (approx. 3,450 g)



LG400 TRUE WALNUT STOCK

ITEM NO. 286 87 25

LG400 TRUE WALNUT STOCK FOR FREE-RIFLE COMPETITIONS FEATURES

- True walnut stock for right/left position
- Integrated T-slot rail
- Quick-action setting of stock length and cheek piece
- Fore-end with swivel movement
- Walther SINUS light metal butt plate
- Steel cylinder with pressure gauge
- SPORT match diopter with swivel movement and CENTRA SCORE foresight holder
- Barrel weight 30 g

LG400 Rest Shooting

LG400: WHEN ALMOST PERFECT ISN'T GOOD ENOUGH.

In no other discipline are shooters so evenly matched. To win in rest shooting, you need more than just a full ring score. The LG400 is designed specifically for rest shooting. Its unsurpassed accuracy will help you achieve your full potential



LG400 ALUTEC FOR REST SHOOTING FEATURES

- MAXI steel cylinder with pressure gauge
- Ergonomically shaped loading lever (left-hand or right-hand positioning as required)
- Breech for easy loading and precise pellet guidance
- Loading status indicator
- Aluminum stock with T-slot rail and a wide range of settings
- Stock can be twisted
- Precision setting of stock length and cheek piece
- Walther SINUS light metal butt plate and shoulder rest
- Absolutely tension-free barrel mounting
- SPORT match diopter and CENTRA foresight holder, 22 mm
- UP sight raiser blocks



ITEM NO. 280 11 08



ITEM NO. 286 87 33

LG400 TRUE WALNUT FOR REST SHOOTING FEATURES

- MAXI steel cylinder with pressure gauge
- Universal walnut stock and T-slot rail
- Quick-action setting of stock length and cheek piece
- Fore-end with swivel movement
- Walther SINUS light metal butt plate and shoulder rest
- SPORT match diopter with swivel movement and CENTRA foresight holder 22 mm
- UP sight raiser blocks

LG400 Special

SPECIALTIES FROM THE SPECIALISTS.

We also offer modified LG400 versions for special disciplines like dynamic shooting at a running target or outdoor competitions. They're perfectly matched to the requirements of each sport and meet the high quality standards you've come to expect from Walther.



LG400 FIELD TARGET ALUTEC

ITEM NO. 282 57 24 (16 JOULE) • ITEM NO. 283 32 98 (7.5 JOULE)

LG400 FIELD TARGET ALUTEC FEATURES

- LG400-M system
- Expert aluminum stock with precision adjustment
- PROTOUCH wood add-on parts, painted
- Pressure reducer, 16 joules muzzle energy
- MAXI steel cylinder
- EXPERT hook butt plate
- Butt plate rod with 5 weights, each 30 g
- Barrel length 565 mm, barrel jacket 495 mm
- Special front sight extension (tube)
- Adjustable aluminum take-down lever
- Fore-end elevation
- Aluminum trigger guard
- No diopter, no foresight holder, no scope

LG400 FIELD TARGET TRUE WALNUT STOCK

ITEM NO. 286 87 09 (16 JOULE) • ITEM NO. 286 87 17 (7.5 JOULE)



LG400 FIELD TARGET TRUE WALNUT STOCK FEATURES

- Walnut stock with T-slot rail
- Maxi steel cylinder
- Light metal butt plate SINUS
- Loading status indicator
- Barrel length 560 mm
- Compensator
- Without sights

LG400 TARGET SPRINT

ITEM NO. 285 85 84



LG400 TARGET SPRINT FEATURES

- Aluminum stock
- Pellet holder for 20 pellets
- Steel cylinder
- Quick adjustable butt length and cheek piece

KK500



POWERED PERFORMANCE.

THROUGH EVOLUTION TO REVOLUTION

The Walther KK500 is a flagship for our proven line of small-bore rifles. With its exclusive technical features, unequalled accuracy, exceptional trigger and improved ergonomic stock, the KK500 is a reliable partner for demanding shooters competing at highest level. It is made of high-grade materials only and crafted with impeccable care. The result is a premium-quality competition rifle that delivers top performance and trusted reliability.



QR code for detailed product information

KK500

ONE RIFLE. INFINITE POSSIBILITIES.

Every shooter wants to have flexibility when choosing a rifle and it's components. KK500 system is built to fulfill any needs, any time. Easily changeable trigger unit from electronic to mechanic, wooden or aluminum stock, even from right to left handed shooter; all you need is a grip! Choose your system with barrel which fits your positions best according the rifle's weight distribution. Ultra light, Light or Heavy. Choose our exclusive components which gives you your own personal feeling.





- | | | |
|--|---|---|
| <p>01 Barrel
690 mm length, standard, blued
650 mm length, standard, blued
650 mm length, ultra-light, blued
690 mm length, fluted, stainless</p> <p>02 EXPERT hook butt plate, silver</p> <p>03 MEC FREE POSITION II hook butt plate</p> <p>04 ECONOMY hook butt plate</p> <p>05 Butt plate rod set: short (60 mm), long (100 mm)
or extra long (150 mm); butt plate rod: short (40 mm)
or long (65 mm)</p> <p>06 ALL-IN-ONE interchangeable cheek piece</p> <p>07 WING chest rest</p> | <p>08 BIOMETRIC grip "Blue Angel", sizes S/M/L for right-handers, plus M for left-handers</p> <p>09 BIOMETRIC grip "PROTOUCH", right size S/M/L, left size M</p> <p>10 BIOMETRIC grip "Green", right, size M</p> <p>11 BIOMETRIC grip "Red Devil", right, size S</p> <p>12 "Blue Angel" fore-end elevation</p> <p>13 "Red Devil" fore-end elevation</p> <p>14 SMART rest shooting bracket</p> <p>15 MEC hand stop</p> <p>16 Walther Handstop</p> <p>17 STABILIZER 220 g</p> | <p>18 Weight, 30 g, for STABILIZER weight bar</p> <p>19 Interchangeable electronic trigger</p> <p>20 Interchangeable mechanical trigger</p> <p>21 Bolt protection blue (for transport)</p> <p>22 INSIGHT-OUT match diopter</p> <p>23 SPY short match diopter</p> <p>24 BLOCK CLUB raised line of sight</p> <p>25 UP sight raiser blocks</p> <p>26 Foresight holder 22 mm</p> <p>27 Centra SCORE foresight holder, 22 mm diameter</p> <p>28 Centra SCORE foresight holder, 18 mm diameter</p> |
|--|---|---|

KK500 Anatomic

FOR CHAMPIONS: HIGHLIGHTS MADE BY WALTHER.

The KK500 scores extra points with a wide range of exclusive technical features. One highlight is the bolt handle, which can be positioned without tools to suit either right or left-handed shooters. You can change the side of operation within seconds. Cartridge ejection can be easily changed to the other side.



KK500-E ANATOMIC

"Blue Angel", right/left system • Electronic trigger

ITEM NO. 2863910E RIGHT-HAND GRIP SIZE M
ITEM NO. 2863910E_0001 LEFT-HAND GRIP SIZE M



KK500-M ANATOMIC

"Blue Angel", right/left system • Mechanical trigger

ITEM NO. 2863910M RIGHT-HAND GRIP SIZE M
ITEM NO. 2863910M_0001 LEFT-HAND GRIP SIZE M



KK500-M ANATOMIC GREEN PEPPER

"Green Pepper", right/left system • Mechanical trigger

ITEM NO. 2863910M_0002 RIGHT-HAND GRIP SIZE M

FEATURES

- BACKTAKE bolt positioned far back and deep in the stock (for easy reloading from a firing position)
- 3D chased grip in three sizes and two geometries
- Very short, raised butt stock area (ideal for smaller shooters)
- Minimized distance between the fore-end and barrel axis (for maximum stability, especially in prone firing)
- EXPERT butt plate (quick replacement by manually loosening a single clamping screw)
- ALL-IN-ONE cheek piece (ambidextrous, with two contact surfaces)
- Fine adjustment for cheek piece (angle – edge – radius) and quick-change feature
- Ball-bearing-mounted match trigger with trigger stop (two-stage and single-stage mode)
- Minimum distance between finger and barrel axis

WALTHER AMBI-ACTION SYSTEM

Check your foot position and stance, breathe, aim, fire: in competitions it's crucial to maintain your firing position when reloading between shots. Stay glued to the target! Our patented AMBI-Action system makes it possible to reload with your left hand. The bolt lever can be operated from either side, and you can change it from one side to the other without tools in just a few seconds.



KK500 Expert

NOTHING BUT THE BEST.

Nothing but the best: the KK500 comes with a dazzling range of features. And it's no wonder, because numerous international professional shooters have given their input to our design engineers. The result is a unique precision rifle.



KK500-E EXPERT

"Blue Angel", right/left system • Electronic trigger

ITEM NO. 2863928E RIGHT-HAND GRIP SIZE M
ITEM NO. 2863928E_0001 LEFT-HAND GRIP SIZE M



KK500-M EXPERT

"Blue Angel", right/left system • Mechanical trigger

ITEM NO. 2863928M RIGHT-HAND GRIP SIZE M
ITEM NO. 2863928M_0001 LEFT-HAND GRIP SIZE M



KK500-M EXPERT GREEN PEPPER

"Green Pepper", right/left system • Mechanical trigger

ITEM NO. 2863928M_0002 RIGHT-HAND GRIP SIZE M



KK500 FOR REST SHOOTING

FEATURES

- BACKTAKE bolt positioned far back and deep in the stock (for easy reloading from a firing position)
- 3D chased grip in three sizes and two geometries
- Very short, raised butt stock area (ideal for smaller shooters)
- Cast of the butt stock can be adjusted by means of a parallel linkage
- Minimized distance between the fore-end and barrel axis (for maximum stability, especially in prone firing)
- EXPERT butt plate (quick replacement by manually loosening a single clamping screw)
- ALL-IN-ONE cheek piece (ambidextrous, with two contact surfaces)
- Fine adjustment for cheek piece (angle – edge – radius) and quick-change feature
- Ball-bearing-mounted match trigger with trigger stop (two-stage and single-stage mode)
- Minimum distance between finger and barrel axis
- 6 o'clock firing pin position (consistent combustion)
- Weight-optimized firing pin (ultrashort release)

WITH SMART bench rest bracket, MEC Contact III aluminum butt plate, UP sight raiser blocks, CENTRA SCORE foresight holder, 22 mm

WITHOUT Hand stop, Fore-end elevation, Hook butt plate, BLOCK CLUB raised line of sight, CENTRA SCORE foresight holder, 18 mm

ITEM NO. 2863928M_0003 RIGHT-HAND GRIP SIZE M

KK500 Ultra light

AS YOU LIKE IT

The KK500 Ultra Light delivers a short and especially lightweight design. For bench rest shooters we've also put together a special package of features.

KK500 EXPERT ULTRA LIGHT

BIOMETRIC grip "Red Devil" right-hand size S • right/left system • Mechanical trigger

ITEM NO. 2863928M_0004



FEATURES

- 650 mm "light barrel"
- Extremely short stock possible
- Long bolt knob (+ 15 mm), red anodized
- "Red Devil" laminated wood fore-end and S grip
- Silver-coloured anodized stock
- CENTRA SPY diopter
- WING chest rest in accordance with new rules

KK500 Blacktec

HIGH PERFORMANCE DOESN'T HAVE TO BE EXPENSIVE.

The high-precision and successful KK500 system in BLACKTEC stock sets new standards in terms of price- performance ratio. A genuine match rifle at the price of an entry-level gun. Due to the many individual adjustment possibilities and the option to use the system and the stock as right- and left-handed shooter, there are no unfulfilled wishes. With its light weight, the KK500 BLACKTEC is equally suitable for all age groups.



KK500 BLACKTEC

"Right-/left-hand grip • right/left system • Mechanical trigger

ITEM NO. 2863986M

FEATURES

- Short bolt with loading slot shifted to the rear
- Weight-optimized firing pin for shortest possible shot release times
- 3 locking lugs, very smooth-running due to new surface coating
- Bolt handle and case ejection can be changed from right to left (changing of the bolt possible without tools)
- Universal stock with right/left grip
- Cheek piece for right and left-hand stop positions
- Fore-stock slidable and adjustable in height
- Cheek and backend freely adjustable in height and length
- Adjustable match trigger 50-130 g for single or two stage use
- Lightweight (5 kg), therefore suitable for all age groups
- Upgradeable by standardized connections

LP500



POWERED PERFORMANCE.

MAXIMUM. PERFORMANCE.

When developing the LP500 we only had one goal in mind:

- To exceed our athlete's individual performance levels.
- The best air pistol is not simply more intuitive, more ergonomic, more accurate.
- The best air pistol paves the way for the perfect symbiosis of pistol and athlete.



QR code for detailed product information

LP500

MIX AND MATCH

Something for everyone? Yes, because the LP500 is versatile, in keeping with the diversity of its owners. Whether you're an ambitious novice, an experienced gun club member or a demanding professional, the Walther modular system lets you combine the components as you wish, and we can make you your own personal dream pistol on our high-tech assembly line.





WALTHER LP500 – THE IMPRESSIVE AIR PISTOL.

- Interchangeable trigger unit, with a choice of electronic or mechanical trigger, easy to switch
- MASTER trigger blade, adjustable in four ways
- Aluminum cylinder
- SADDLE design of breech for easy loading
- 5D grip with variable volume
- INLINE weights (internal, sliding)
- Rear sight and front sight pivotable
- Ball bearing match trigger



04



11



12



13



- 01 LP500 system with:
Standard aluminum barrel jacket (80 g)
LIGHT compensator with rotating front sight 3.8/4.4/4.7
HEAVY steel compensator with rotating front sight 3.8/4.4/4.7 (not shown)
Rotating front sight 3.2/3.6/4.0 (not shown)
GOLD barrel with gas ports and STABILIZER
or SILVER barrel without STABILIZER (not shown)
- 02 Interchangeable mechanical trigger (M-trigger)
- 03 Interchangeable electronic trigger (E-trigger)
- 04 CARBON cylinder made of aluminum-carbon composite (160 g) aluminum cylinder black, silver (190 g)

- 05 3D moulded match grip for right-handers or left-handers, with REGULAR or SLIM grip volume, in sizes XXS to XL, made of walnut or coloured laminated wood
- 06 3D laminated wood grip, blue
- 07 5D grip, right-handed, with variable grip volume, sizes M/L
ALL-IN-ONE moulded polymer grip, right/left-handed, sizes S - L (not shown)
- 08 Colour design in chrome.
- 09 Colour design in blue.
- 10 Colour design in red. Red is reserved exclusively for the Meister Manufaktur variants.

- 11 Sliding INLINE weight, 10 g, for rectangular barrel jacket
- 12 Barrel jacket weight, 30 g, for round barrel jacket
Weight bar, 25 g, with 20-g weights (not shown)
- 13 HORIZONT grip plate for rest shooting
Aluminum grip plate for rest shooting (not shown) /
Steel grip plate for rest shooting (not shown)
- 14 Round barrel jacket with barrel jacket weight
- 15 LIGHT barrel jacket (16 g)
- 16 Compensator Heavy with triangular front sight, 3.8/4.4/4.7, weight 118 g
- 17 Compensator Light with triangular front sight, 3.8/4.4/4.7, weight 50 g

THE MAJOR DIFFERENCE.

Many details have to be considered when developing the perfect product for athletes demanding to cross their personal boundaries. Three main factors, however, make the difference between a very good pistol and our LP500.





POWERED PERFORMANCE.



INTUITIVE. PERFORMANCE.

The LP500 Electronic Trigger is considered by top champions as today's benchmark in trigger design. Main features are 100% consistency from shot to shot and superb trigger characteristics: The trigger breaks like glass. Implemented through the innovative Walther DirectSystem of electronic and triggering components. An absolute minimum of mechanical parts results in minimal locktime and maximum steadiness of the system.

Performance was never so intuitive.

"IN LETTING YOUR GUN DO THE JOB YOU RAISE YOUR PERFORMANCE LEVEL. YOUR CONFIDENCE AS WELL."

Michael Heise, National Team and German League (Bundesliga) Shooter

ERGONOMIC. PERFORMANCE.

The LP500's basic design is following an uncompromising path laid out by human anatomy and anthropometrics. Anatomic Grip: Ergonomically perfected grip with adjustable palm rest. Low position of action and bore-axis relative to the grip. Ideal grip-angle for intuitive shooting without causing fatigue. Individually adjustable via 3D adjustment. In short: The LP500 Anatomic Grip fits like a second skin. Trigger blade adjusts for length of pull, height and angle for perfect finger placement. Fundamental for an intuitive flawless pull. Advanced Weight Engineering: The LP500's design is the result of precise specifications of overall weight, center of gravity, weight distribution and balance of the pistol. Individually adjustable.

Performance was never so ergonomic.

"WOW THAT FITS." THAT WAS MY IMPRESSION WHEN I FIRST TOOK THE GRIP OF THE LP500. IT FELT AS IF IT WAS PART OF THE ARM. I WAS FASCINATED RIGHT FROM THE START. THIS WAS ALSO CONFIRMED DURING THE TEST PHASE WITH THE PROTOTYPE. TO THIS DAY I HAVE NEVER SHOT A PISTOL WITH A BETTER GRIP. EVERYTHING JUST FITS.

Matthias Holderried, National Team and German League (Bundesliga) Shooter

ACCURATE. PERFORMANCE.

The LP500's accuracy has earned a legendary reputation in a very short time. It is the achievement of a passionate team in our Walther barrel-competence-center. Every day they strive for the best solution in technology, tooling, materials and processes to achieve the maximum accuracy of our LP500.

Understanding that the final performance of the LP500 is more than the isolated accuracy of our barrels it is the result of a fine tuned interaction with our 8-Channel-Compensator, Walther Airporting System, Advanced Weight Engineering and the adjustable Tungsten Absorber. Put simply: An uncompromising precision-system.

Performance was never so systematic.

"EVERY DAY WE RECEIVE FEEDBACK FROM OUR TOP ATHLETES IN THE WORLD, THANKING US FOR INCREASING THEIR SUCCESS-LEVELS WITH THEIR LP500S. THIS IS THE HIGHEST LEVEL OF CONFIRMATION MY TEAM AND MYSELF CAN GET. WINNING IS NEVER AN ISOLATED ACCOMPLISHMENT. IT IS THE PERFECT SYMBIOSIS OF ATHLETE AND GUN."

Thomas Bretschneider, Head of R&D Competition

LP500 Versions

ENGINEERED TO THE POINT. NO DIFFERENT THAN THE PISTOL ITSELF.



LP500

"Blue Angel" grip • Mechanical trigger

ITEM NO. 2854767M_0012/_0010/_0013 SIZES S/M/L RIGHT
ITEM NO. 2854767M_0016/_0017/_0018 SIZES S/M/L LEFT



LP500

Walnut grip • Mechanical trigger

ITEM NO. 2854767M_0002/_/_0003 SIZES S/M/L RIGHT
ITEM NO. 2854767M_0006/_0007/_0008 SIZES S/M/L LEFT



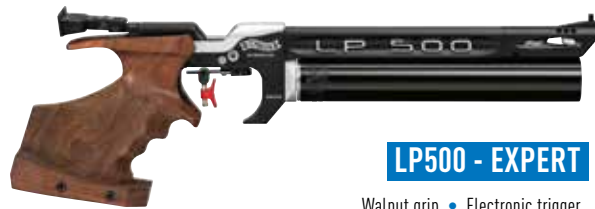
LP500 - EXPERT

"Blue Angel" grip • Electronic trigger

ITEM NO. 2854759E_0012/_0010/_0013 SIZES S/M/L RIGHT
ITEM NO. 2854759E_0016/_0017/_0018 SIZES S/M/L LEFT

"Blue Angel" grip • Mechanical trigger

ITEM NO. 2854759M_0012/_0010/_0013 SIZES S/M/L RIGHT
ITEM NO. 2854759M_0016/_0017/_0018 SIZES S/M/L LEFT



LP500 - EXPERT

Walnut grip • Electronic trigger

ITEM NO. 2854759E_0002/_/_0003 SIZES S/M/L RIGHT
ITEM NO. 2854759E_0006/_0007/_0008 SIZES S/M/L LEFT

Walnut grip • Mechanical trigger

ITEM NO. 2854759M_0002/_/_0003 SIZES S/M/L RIGHT
ITEM NO. 2854759M_0006/_0007/_0008 SIZES S/M/L LEFT



LP500 - EXPERT "REST SHOOTING"

"Blue Angel" grip • Electronic trigger

ITEM NO. 2854775E_0012/_0010/_0013 SIZES S/M/L RIGHT
ITEM NO. 2854775E_0016/_0017/_0018 SIZES S/M/L LEFT

"Blue Angel" grip • Mechanical trigger

ITEM NO. 2854775M_0012/_0010/_0013 SIZES S/M/L RIGHT
ITEM NO. 2854775M_0016/_0017/_0018 SIZES S/M/L LEFT



LP500 - EXPERT "REST SHOOTING"

Walnut grip • Electronic trigger

ITEM NO. 2854775E_0002/_/_0003 SIZES S/M/L RIGHT
ITEM NO. 2854775E_0006/_0007/_0008 SIZES S/M/L LEFT

Walnut grip • Mechanical trigger

ITEM NO. 2854775M_0002/_/_0003 SIZES S/M/L RIGHT
ITEM NO. 2854775M_0006/_0007/_0008 SIZES S/M/L LEFT



LP500 "MEISTER MANUFAKTUR" EQUIPMENT PROPOSAL

5D PROTOUCH grip • Electronic trigger

ITEM NO. 2824621_0004 SIZES M-L REGULAR RIGHT



LP500 "MEISTER MANUFAKTUR" BLUE

5D PROTOUCH grip • Electronic trigger • sizes M-L right

ITEM NO. 2863219E

5D PROTOUCH grip • Mechanical trigger • sizes M-L right

ITEM NO. 2863219M

GSP500



POWERED PERFORMANCE.

BEYOND LEGENDARY.



QR code for detailed product information

GSP500

UNCOMPROMISINGLY ENGINEERED

During development of the GSP500 we only had one goal in mind: To exceed our athlete's individual performance levels. The best performing sport pistol is not simply more intuitive, more ergonomic, more accurate. The best performing sport pistol paves the way for the perfect symbiosis of pistol and athlete.





GSP500 FEATURES

- Rear sight - for different disciplines (precision/duel) quickly changeable and comfortably adjustable.
- Ideal positioned breech knobs - Very easy to reach, from the left, right, top and bottom.
- Big sized ergonomic action handles
- Advanced Weight Engineering - The GSP500's center of gravity was placed on the magazine well for balanced weight distribution. 4 spring-loaded tungsten weights of 20 g each and another 4 tungsten weights (for cal .22) in the front sight carrier allow fine-tuning of the balance.
- Maximum variability - The trigger blade is 3-fold adjustable in height and swiveling and thus individually adjustable
- Anatomic Grip - 3 grip sizes right (S/M/L), 1 grip size left (M).
- Modular construction - The trigger module is removable as an assembly. Indispensable for top shooters and service.
- Action recoil absorber, to minimize the jump of the pistol



GSP500 .22 L.R.



GSP500 .32 S&W LONG WC

Caliber	.22 L.r.	.32 S&W long WC
Barrel length	123 mm	124 mm
Trigger weight	1.000 g	1.000 g
Magazine	6 rounds	5 rounds
Sights	Triangular sight 3,2 / 3,6 / 4,0	Triangular sight 3,2 / 3,6 / 4,0
Sight lengths	220 mm	220 mm
Grip sizes	S, M, L , left M	S, M, L , left M
Grip material	Laminated wood, blue	Laminated wood, blue
Dimensions L/H/B	300/140/50 mm	300/140/50 mm
Weight *	1.040 g	1.150 g

* inclusive magazine and 2 weights each of 20 g

GSP500

THE MAJOR DIFFERENCES

Many details must be considered when developing the perfect product for athletes demanding to cross their personal boundaries. Four main factors, however, make the difference between a very good pistol and our GSP500.

GSP500 TRIGGER

The GSP 500 trigger breaks crisp and clean at the precisely defined second stage. 100% consistent from shot to shot. Over many thousands of rounds. Following a smart overall setup of its component's geometry with respect to masses, pivoting-points and sears. As well as the use of state-of-the-art materials, surface-heat-treatments. A minimal number of mechanical parts and a lightning-fast locking-time maximize the overall system's stability.

All trigger adjustments are easily, intuitively, and precisely set, without need to take the trigger unit out of the frame. For maintenance the trigger unit is easily removable.

Triggering was never so enjoyable.



GSP500 ERGONOMICS

GSP500's basic design is following an uncompromising path laid out by human anatomy and anthropometrics.

Anatomic Grip: Pointability second to none. Ergonomically perfected grip with adjustable palm rest. Low position of action and bore-axis following by ISSF rules. Ideal grip-angle for intuitive aiming without causing wrist tension and fatigue.

Trigger blade: Adjustable length of pull, height, and angle. Fundamental for intuitive and flawless pull.

Advanced Weight Engineering: GSP500's design is the result of precise weight distribution, perfect center of gravity placement, and individually adjustable balancing weights.

Performance was never so ergonomic.

GSP500 ACCURACY

The goal was challenging: To increase the GSP's legendary reliability and accuracy. A passionate and skilled team in our barrel-competence-center strives every day for the latest technologies, tools, and materials to realize the best possible accuracy of our barrels. This is how most accurate and innovative GSP500 barrel-profile was developed. The most accurate GSP that Walther ever built.

However, the GSP500's final accuracy is way more than the barrel itself. The perfect composition of barrel, barrel-bedding and a solid frame result in a precise system without compromise.

Performance was never so accurate.



GSP500 SHOOTABILITY

Low bore-axis, optimized grip-angle and the innovative Walther Slide Control System result in outstanding „shootability“ with very accurate response to the shooter. The Slide Control System features a “Sylomer” high performance polyurethane buffer with 4mm stroke, resulting in a smooth and controlled deceleration of the action.

Shooting is smooth and controllable; the muzzle returns repeatedly to the zero-point and the shooters receive a precise response that helps them “read” every shot. That enables the shooters to remain focused and follow through from shot to shot without fatigue over the longest shooting sessions.

Performance was never so repetitive.

GSP500 CAL. .22L.R.

ITEM NO.	MODEL
2840341M_0010	GSP500 CLASSIC .22L.R. Right M
2840341M_0012	GSP500 CLASSIC .22L.R. Right S
2840341M_0013	GSP500 CLASSIC .22L.R. Right L
2840341M_0017	GSP500 CLASSIC .22L.R. Left M



GSP500 CAL. .32S&W LONG WC

ITEM NO.	MODEL
2850575M_0010	GSP500 CLASSIC .32S&W Right M1
2850575M_0012	GSP500 CLASSIC .32S&W Right S
2850575M_0013	GSP500 CLASSIC .32S&W Right L
2850575M_0017	GSP500 CLASSIC .32S&W Left M



GSP500

ACCESSORIES



Conversion Unit .22L.R.



Conversion Unit .32S&W



Grip right in sizes S, M, L



Grip left in size M



Magazine .22

Magazine .32



Change rear sight



Weight bar

CONVERSION UNIT

ITEM NO.	MODEL
2870738	Conversion Unit .22L.R. incl. 2 Magazines
2870746	Conversion Unit .32S&W incl. 2 Magazines

GRIPS

ITEM NO.	MODEL
2858959	Grip right M cpl. SH GSP500
2858967	Grip right S cpl. SH GSP500
2858975	Grip right L cpl. SH GSP500
2858983	Grip left M cpl. SH GSP500

MAGAZINES

ITEM NO.	MODEL
2850532	Magazine .22 cpl. blue
2856590	Magazine .32 cpl. blue

SIGHT

ITEM NO.	MODEL
2869268	Change rear sight
2743772	Front sight, turnable 4,7/4,4/3,8 mm
2743778	Front sight, turnable 3,8/4,4/4,7
2743768	Front sight, turnable 4,0/3,6/3,2
2743774	Front sight, turnable +1 4,0/3,6/3,2

WEIGHT BARS

ITEM NO.	MODEL
2871785	Weight bar set with 2 weight bars (20 g each) and 2 springs. 8 weights are mountable in the barrel jacket

MEISTER MANUFAKTUR



HANDCRAFTED BY OUR HIGHLY SKILLED MASTER
GUNSMITHS, EVERY PIECE IS TRULY UNIQUE.

Through premier technical features, through aesthetics, in a combination of both. A Walther Meister Manufaktur is much more than a pure Competition Gun. It is a reflection of it's owner's personality.

Contact: Michael Vesper, phone +49(0)731/1539-123.



QR code for detailed information

T9F

TEN NINE FACTORY BY WALTHER

TEN NINE FACTORY „T9F“ is the new Walther Performance Center for precision shooting sports. It represents building the perfect weapons system to include the weapon, ammunition, and accessories for the Olympic shooting disciplines of air rifle, air pistol, small bore rifle and sport pistol. This is a „one-stop shop“ for equipping true champions.

Ambitious sport shooters and professional athletes alike can take advantage of competent advice provided by Carl Walther experts on site.

Walther draws on the expertise of its „own“ top national and international shooters in-house. Among them are former national team members, World, and European champions. They are all united by a passion for perfection in

shooting sports. Many top national and international shooters have placed their trust in Walther's specialists for many years – now everyone can benefit from this expertise at the TEN NINE FACTORY.

Get individual advice and coaching. Perfection is possible, our T9F professionals know how. Together with you we create a personal setup for your competition shooting equipment in your desired discipline. Fine-tuning and valuable tips are given first-hand in the consultation. On the air gun shooting range in the TEN NINE FACTORY you can immediately test every setting and check and evaluate the result on the most modern electronic equipment from Meyton.



The TEN NINE FACTORY not only offers best in class service, it does much more: In addition to the full Carl Walther product range, the T9F has world-class shooting accessories available. With high-quality products from exclusive partners Sauer, Centra and RWS, Walther makes the dream of an individual sports package come true. To round off the service, ammunition lots can be tested with the air gun and the gun can be adjusted individually.

The Walther Performance Center thus offers an all-round service with exactly one goal – the personal increase in performance of any competition shooter. The „T9F“ is an important part of the Walther brand world in close cooperation with the competent specialized trade, domestically and abroad. Together with

our specialist retail partners and competition shooters, Carl Walther GmbH is thus proactively committed to the future of competition sports.

To make your visit to the Walther „T9F“ your personal success, we kindly ask you to make an appointment in advance. In this way, the Walther service team can take care of your needs and wishes individually and with the appropriate time budget.

Appointments can be made through your local dealer or directly online.
Contact: T9F@carl-walther.de

We look forward to meeting you!



CONTACT DETAILS

PHONE: 0731 / 15 39 0 • **MAIL:** T9F@carl-walther.de • **WEB:** www.ten9factory.com • **ADD:** Carl Walther GmbH Ulm, Im Lehrer Feld 1, 89081 Ulm, Germany




QR code for more information





POWERED PERFORMANCE.

CARL WALTHER GMBH

Im Lehrer Feld 1 D-89081 Ulm Germany phone +49-731-1539-0 info@carl-walther.de
carl-walther.de  /WALTHERWAFFEN  CARLWALTHERTV  @CARL_WALTHER_GERMANY

We reserve the right to make colour and design changes and technical improvements. No responsibility is accepted for printing errors or incorrect information.
All information provided without any guarantee. © 2023 Carl Walther GmbH / Printed in Germany / 2836696 CW.01-23.3,0.13 rev.a